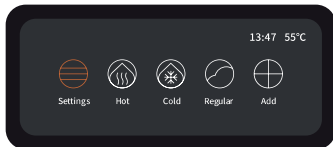




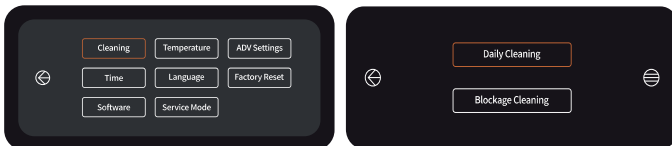
MILKPAL

Daily Cleaning Instructions

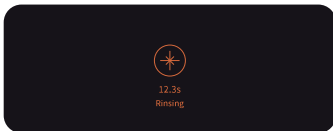
1. Go to the 'Setting' page.



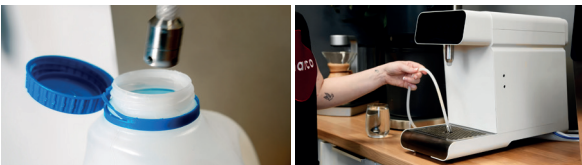
Click 'Cleaning' button then 'Daily Cleaning'.



2. The milk outlet will be flushed automatically.

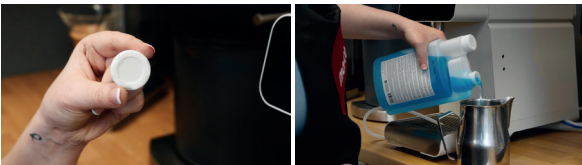


3. Remove milk tube from milk container and connect its tip to the drip tray. Then click ⏸ button.



4. The milk tube will be emptied. Please wait for the countdown timer to finish.

5. Ensure milk pitcher is empty. Click ⏸ button to the next page. Place 1 x cleaning tablet / cleaning liquid into the empty milk pitcher.

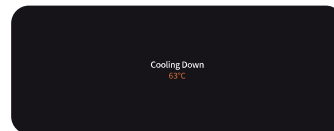


(If using tablet, split or break up before adding to milk pitcher.)

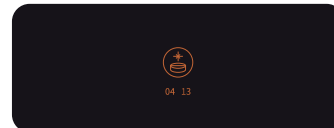
6. Place milk tube into milk pitcher (with cleaning agents.) Place under nozzle. Press the ⏸ button to start cleaning.



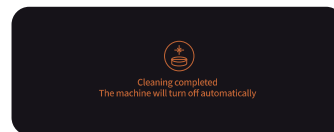
7. The machine cools down to 50°C. Please wait until it ends.



8. Please wait for the countdown time to finish.



9. Cleaning is completed. Please turn off the machine.



10. Wipe the screen daily with a dry microfibre cloth. Do not use cleaning agents on screen.

Daily Recommended Cleaning Materials:

1x Milkpal Tablet	30ml Urnez Rinza Alkaline	1 x Cafetto MFC Blue Tablet
	or 	or 



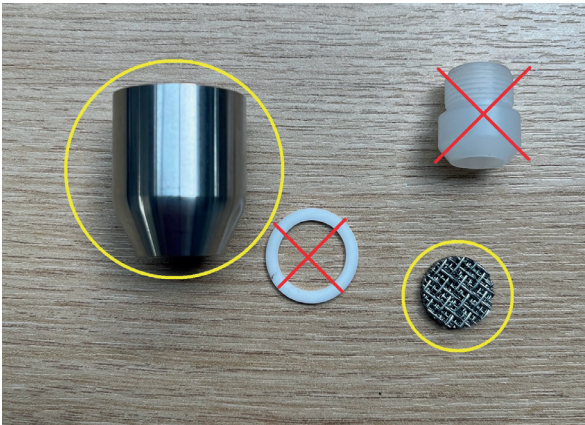
MILKPAL

Weekly Cleaning - Milk Nozzle

1. Unscrew and disassemble milk outlet nozzle.



2. Put all stainless steel items into milk vessel with cleaning agents used in daily cleaning cycle.



3. Follow instructions for daily cleaning

Weekly Cleaning - Acidic Cycle

We recommended running one acidic cleaning cycle per week.

